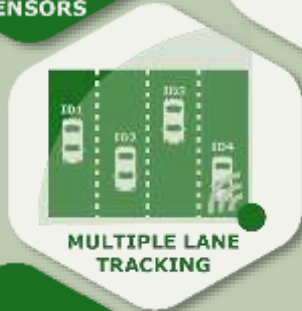


RAMER11 S

Stationary Traffic Speed Camera

TO INCREASE
TRAFFIC ROAD
SAFETY



MAIN FEATURES – Single monochrome camera

- Multiple target tracking Doppler radar sensor
- Combination of optical and microwave technology for verification of the object trajectory
- Simultaneous tracking of objects in several lanes
- Vehicle classification, ANPR
- Main high-resolution image + auxiliary images for secure evidence
- Controlled area up to 3 lanes
- Easy installation and maintenance
- Remote control with intuitive GUI
- Simple configuration

**SOLUTION
CUSTOMISED TO
CLIENT NEEDS**



TECHNICAL SPECIFICATIONS

Range of guaranteed speed measurement accuracy:	10 km/h to 300 km/h
Maximum allowed measurement error:	up to 100 km/h \pm 3 km/h above 100 km/h \pm 3%
Transmission frequency	24 GHz
Transmission power	100mW max
Stationary installation next to the road on a pole height	min. 4 m
Coverage of	3 lanes
Resolution of camera	> 5 MPx
Automatic categorization of objects	motorcycle, passenger, cargo, bus
Independent setting of limits for individual object categories	for each lane, arrival/departure
ANPR function	
Certified spot speed measurement of all objects in the area of interest	
Operation mode, automated	24/7
Infrared illuminator (synchronized with scanning camera imaging)	

Connection to permanent supply voltage 230V/50Hz, communication lines (LTE modem, Ethernet)

IR FLASH



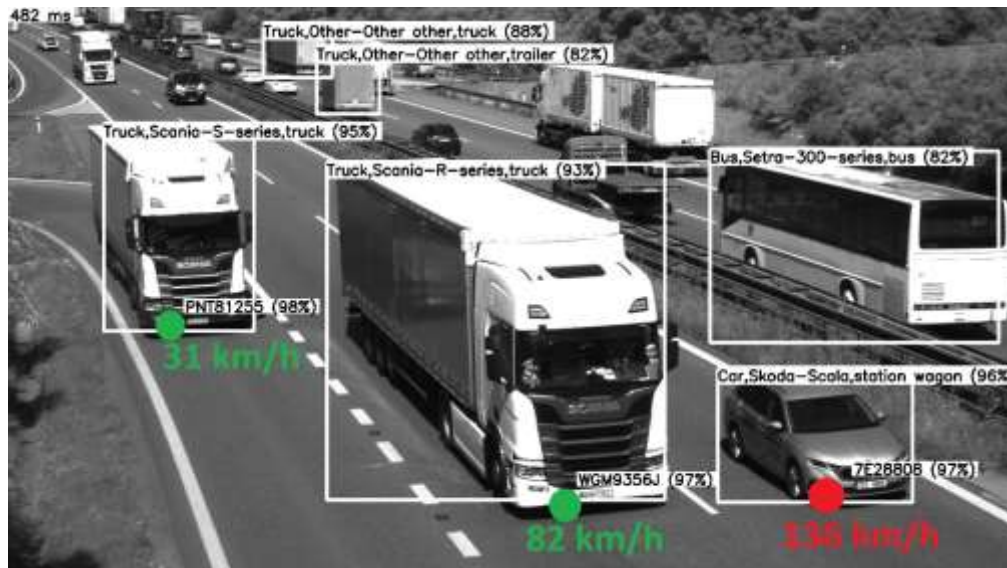
CONTROL COMPUTER



CAMERA



MW SENSOR



RAMET s.r.o.
Letecka 1110,
686 04 Kunovice,
CZECH REPUBLIC



+420 572 415 251



info@ramet.as



www.ramet.as